



InFine

Complete Software Solutions

**VYAPARA BHAVAN ROAD, NORTH PARAVUR
ERNAKULAM, KERALA - 683513.**

Control Panel Home

View installed updates

Turn Windows features on or off

Control Panel

All Control Panel Items

Programs and Features

Search Programs and Features

Uninstall or change a program

To uninstall a program, select it from the list and then click Uninstall, Change, or Repair.

Organize

Name

Adobe Dreamweaver CS6

Android Studio

Apple Software Update

BarTender 2021 R9

Core FTP LE

CSCEB

CSR Harmony Wireless Software Stack

CutePDF Writer

Git

Google Chrome

Google Drive

GoTo Opener

GoToMeeting 10.19.0.19950

GPL Ghostscript

Inno Setup version 5.6.1

Intel® Graphics Driver

Intel® Management Engine Components

Intel® SDK for OpenCL - CPU Only Runtime P

InTime Solutions

Java 7 Update 80

Java 8 Update 331

Java SE Development Kit 8 Update 202

Microsoft .NET Framework 4.7.2

Microsoft ODBC Driver 11 for SQL Server

Microsoft Office Standard 2007

Games

Indexing Service

Internet Explorer 8

Internet Information Services

Internet Information Services Hostable Web Core

Media Features

Microsoft .NET Framework 3.5.1

Microsoft Message Queue (MSMQ) Server

Print and Document Services

RAS Connection Manager Administration Kit (CMAK)

Remote Differential Compression

RIP Listener

OK

Cancel

| | | | |
|-----------------------|------------|---------|----------------|
| InTime Solutions | 10/01/2025 | 208 MB | 1.0 |
| Oracle | 10/03/2022 | 120 MB | 7.0.800 |
| Oracle Corporation | 20/04/2022 | 42.6 MB | 8.0.3310.9 |
| Oracle Corporation | 11/03/2022 | 342 MB | 8.0.2020.8 |
| Microsoft Corporation | 12/08/2022 | | 4.7.03062 |
| Microsoft Corporation | 12/08/2022 | 2.17 MB | 12.3.6024.0 |
| Microsoft Corporation | 10/03/2022 | | 12.0.4518.1014 |

Currently installed programs

Total size: 4.44 GB

58 programs installed

Windows Features

Turn Windows features on or off

To turn a feature on, select its check box. To turn a feature off, clear its check box. A filled box means that only part of the feature is turned on.

Games

Indexing Service

Internet Explorer 8

Internet Information Services

Internet Information Services Hostable Web Core

Media Features

Microsoft .NET Framework 3.5.1

Microsoft Message Queue (MSMQ) Server

Print and Document Services

RAS Connection Manager Administration Kit (CMAK)

Remote Differential Compression

RIP Listener

OK

Cancel

SQL SERVER INSTALLATION

SQL Server 2012 Setup

Setup Support Rules

Setup Support Rules identify problems that might occur when you install SQL Server Setup support files. Failures must be corrected before Setup can continue.

Setup Support Rules

Installation Type

Product Key

License Terms

Setup Role

Feature Selection

Installation Rules

Disk Space Requirements

Error Reporting

Installation Configuration Rules

Ready to Install

Installation Progress

Complete

Operation completed. Passed: 7. Failed 0. Warning 1. Skipped 0.

Hide details <<

Re-run

[View detailed report](#)

| Rule | Status |
|---|-------------------------|
| Fusion Active Template Library (ATL) | Passed |
| Previous releases of SQL Server 2008 Business Intelligence Devel... | Passed |
| No SxS install with SQL Server "Denali" CTP0 | Passed |
| Consistency validation for SQL Server registry keys | Passed |
| Computer domain controller | Passed |
| Microsoft .NET Application Security | Passed |
| Edition WOW64 platform | Passed |
| Windows Firewall | Warning |

< Back

Next >

Cancel

Help

iscss.in

4

Feature Selection

Select the Enterprise features to install.

Setup Support Rules

Setup Role

Feature Selection

Installation Rules

Instance Configuration

Disk Space Requirements

Server Configuration

Database Engine Configuration

Error Reporting

Installation Configuration Rules

Ready to Install

Installation Progress

Complete

Features:

Instance Features

☒ Database Engine Services

☐ SQL Server Replication

☐ Full-Text and Semantic Extractions for Search

☐ Data Quality Services

☐ Analysis Services

☐ Reporting Services - Native

Shared Features

☐ Reporting Services - SharePoint

☐ Reporting Services Add-in for SharePoint Products

☐ Data Quality Client

☐ SQL Server Data Tools

☐ Client Tools Connectivity

☐ Integration Services

☐ Client Tools Backwards Compatibility

☐ Client Tools SDK

☐ Documentation Components

☒ Management Tools - Basic

☒ Management Tools - Complete

☐ Distributed Replay Controller

☐ Distributed Replay Client

☐ SQL Client Connectivity SDK

Feature description:

The configuration and operation of each instance feature of a SQL Server instance is isolated from other SQL Server instances. SQL Server instances can operate side-by-side on the same computer.

Prerequisites for selected features:

Already installed:

Microsoft .NET Framework 4.0

Windows PowerShell 2.0

Microsoft .NET Framework 3.5

To be installed from media:

Microsoft Visual Studio 2010 Shell

Select All

Unselect All

Shared feature directory:

C:\Program Files\Microsoft SQL Server\

Shared feature directory (x86):

C:\Program Files (x86)\Microsoft SQL Server\

< Back

Next >

Cancel

Help

Change Location to
D:\InFine Setup

SQL Server 2012 Setup

Server Configuration

Specify the service accounts and collation configuration.

Setup Support Rules

Installation Type

Product Key

License Terms

Setup Role

Feature Selection

Installation Rules

Instance Configuration

Disk Space Requirements

Server Configuration

Database Engine Configuration

Error Reporting

Installation Configuration Rules

Ready to Install

Installation Progress

Complete

Service AccountsCollation

Microsoft recommends that you use a separate account for each SQL Server service.

| Service | Account Name | Password | Startup Type |
|----------------------------|---------------------------|----------|--------------|
| SQL Server Agent | NT Service\SQLAgent\$T... | | Manual |
| SQL Server Database Engine | NT Service\MSSQL\$TES... | | Automatic |
| SQL Server Browser | NT AUTHORITY\LOCAL... | | Automatic |

Change to
Local Service

< Back

Next >

Cancel

Help

SQL Server 2012 Setup

Database Engine Configuration

Specify Database Engine authentication security mode, administrators and data directories.

Setup Support Rules

Feature Selection

Installation Rules

Instance Configuration

Disk Space Requirements

Server Configuration

Database Engine Configuration

Reporting Services Configuration

Error Reporting

Installation Configuration Rules

Installation Progress

Complete

Server Configuration

Data Directories

User Instances

FILESTREAM

Specify the authentication mode and administrators for the Database Engine.

Authentication Mode

☐ Windows authentication mode

☒ Mixed Mode (SQL Server authentication and Windows authentication)

Specify the password for the SQL Server system administrator (sa) account.

Enter password:

Confirm password:

Specify SQL Server administrators

Add Current User

Add...

Remove

< Back

Next >

Cancel

Help

1

2

3

Change Password

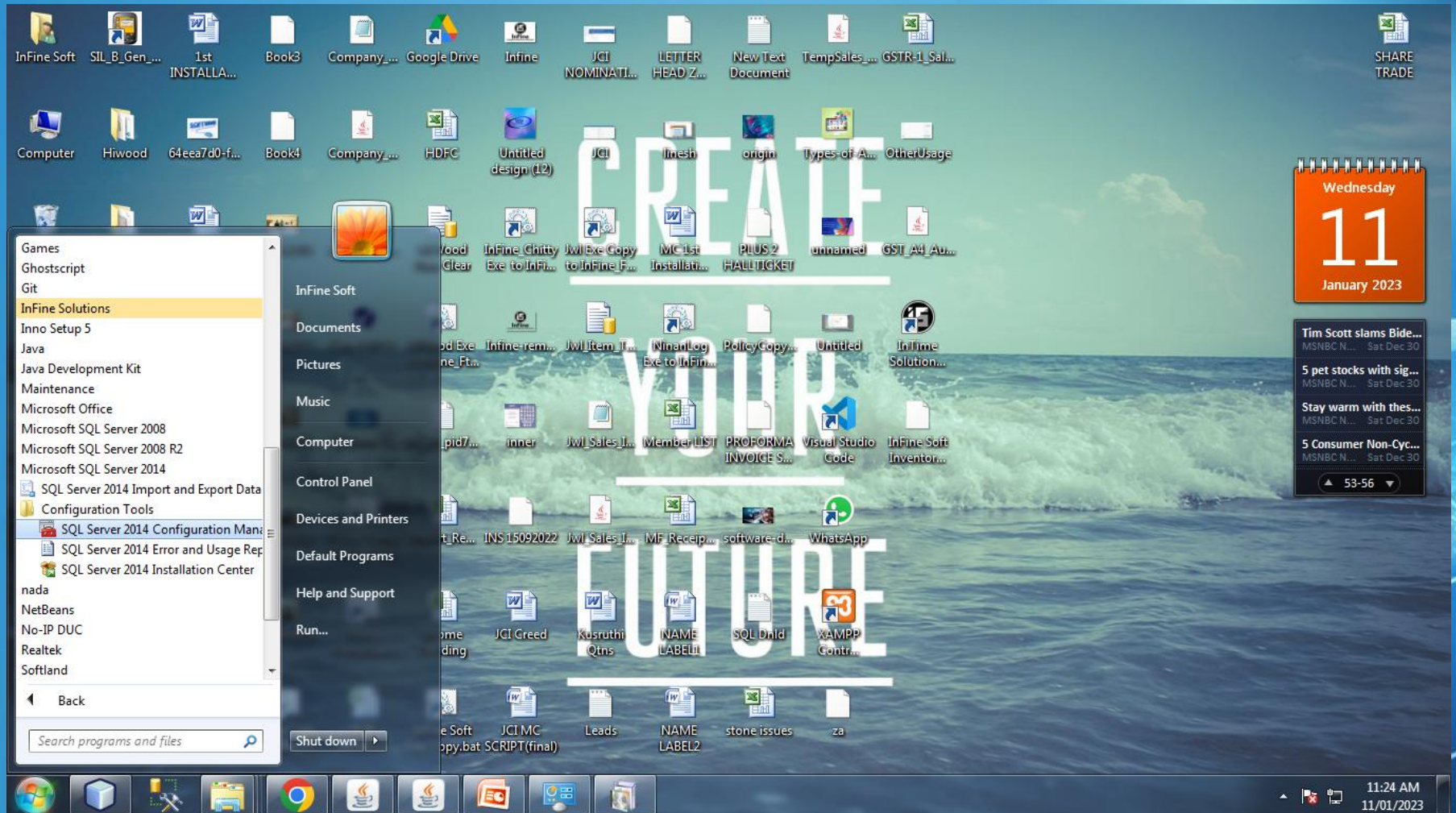
The current Windows user is automatically added here.

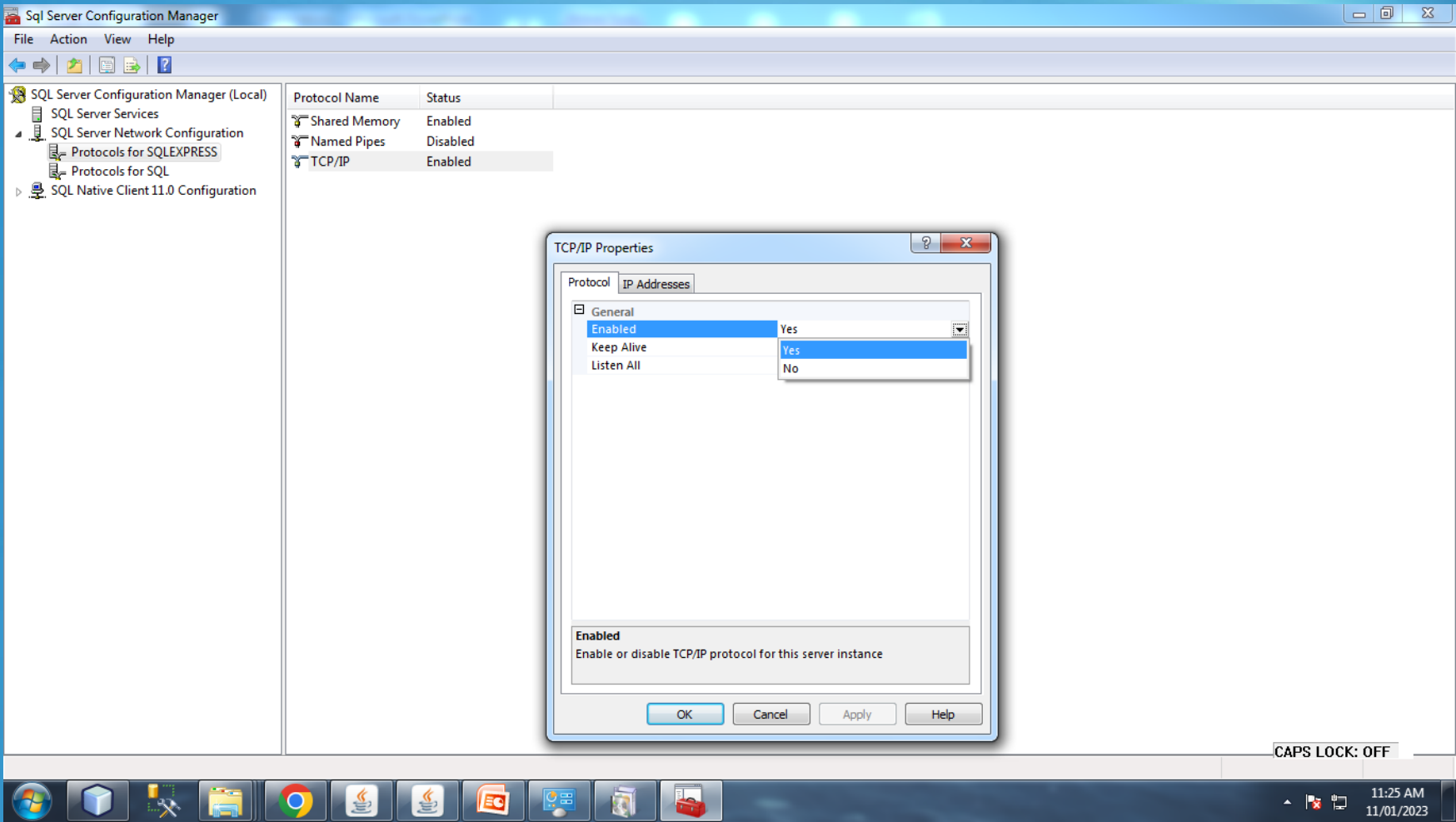
SQL Server administrators have unrestricted access to the Database Engine.

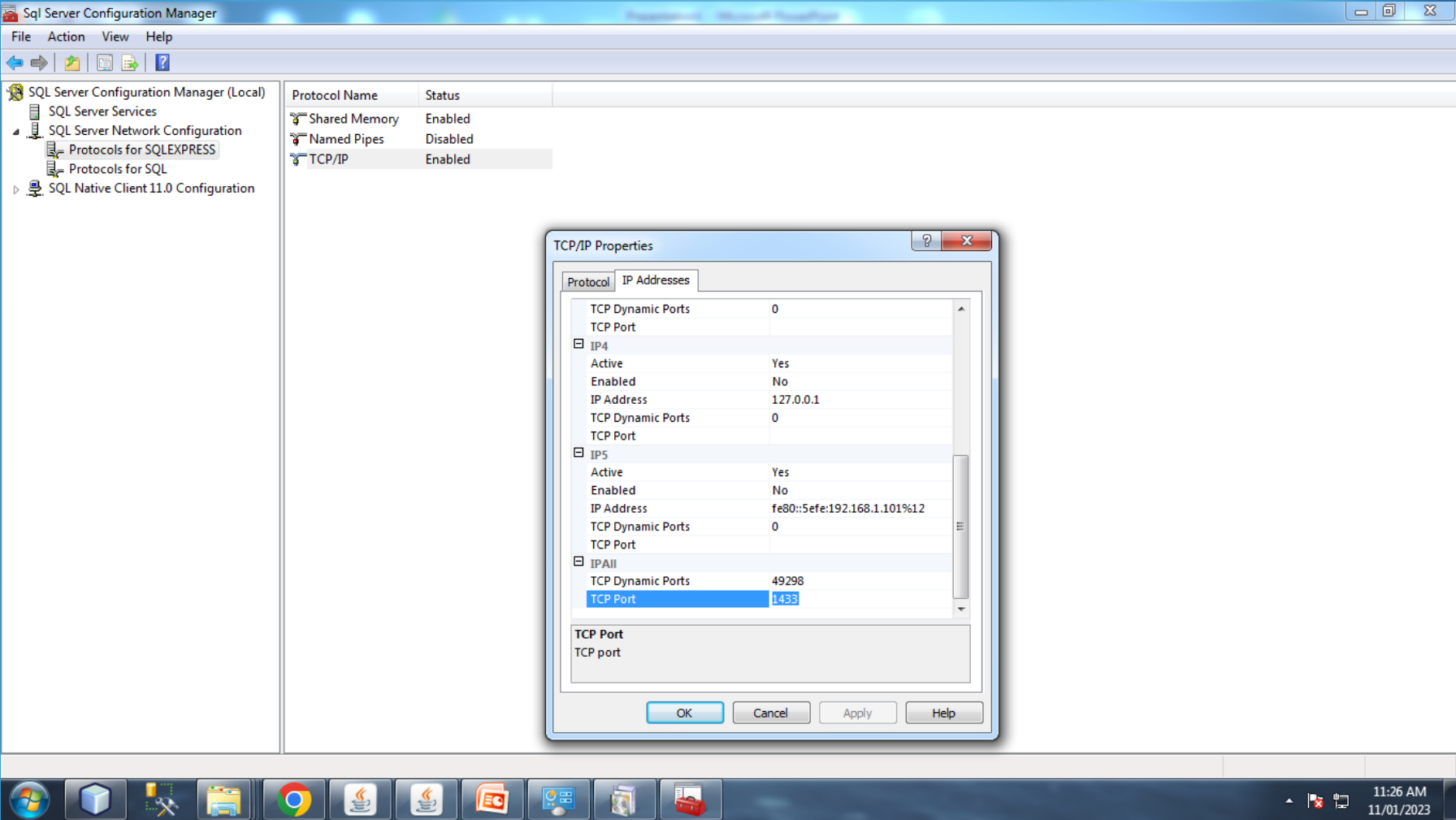
iscss.in

7

SQL Server 2014 Configuration Manager







Thank You